



Ambr[®] 15 Cell Culture Generation 2

Options, Accessories and
Consumables

Simplifying Progress

SARTORIUS

Ambr® 15 Cell Culture Generation 2

System Configuration Options

System Configurations

Ambr® 15 Cell Culture Generation 2 system is available in the following configurations;

- 24 vessel system standard
- 24 vessel system cooled
- 48 vessel system standard
- 48 vessel system cooled

Cooled systems include extended low temperature 20 – 40°C range and additional chilled plate positions.



Integrated at-line analyzers

The following at-line analyzers can be integrated with the Ambr® 15 Cell Culture systems;

- Ambr® Analysis Module for pH and spectroscopy
- Nova Biomedical BioProfile® FLEX2 for cell counting, pH and metabolite analysis
- Vi-CELL XR for cell counting
- Roche Cedex HiRes for cell counting

See page 4 for further details.



Further Options and Accessories

Rapid Vessel Drain Option

Capability to rapidly remove large volumes of culture or spent media from each Ambr® microbioreactor in a single step. See page 5 for further details.

Deck Furniture

Additional deck furniture available for setting up pipette tip boxes, plates, tip box lids and plate lids in the flexible positions on the right hand side of the deck. See pages 6 and 7 for further details.

Centrifuge Adapters

Centrifuge adapters designed to hold Ambr® 15 Cell Culture microbioreactors for centrifugation steps as part of perfusion mimic operations, media exchanges and end-point harvesting. See page 6 for further details.

Integrated At-Line Analyzers

For further information please see the
Integrated Cell Culture Analyzers brochure

Ambr® Analysis Module

Supply and integration of
analysis module for at-line
pH measurements, or for
both pH and spectroscopy
analysis.



Nova Biomedical BioProfile® Flex2 cell culture analyser

Integration with customer
supplied Nova Flex2 and
ESM (external sampling
module) for cell counting,
pH and metabolites analysis.



Beckman Coulter Vi-CELL XR cell counter

Integration with customer
supplied Vi-CELL XR
for cell counting.



Roche Cedex HiRes cell counter

Integration with customer
supplied Cedex HiRes
for cell counting.



Further Options and Accessories

Rapid Vessel Drain Option

Rapid Vessel Drain is available as an option (new systems) or as a field upgrade (existing systems) for Ambr® 15 Cell Culture Generation 2. Please note it is not compatible with Ambr® 15 Cell Culture Generation 1 or Fermentation systems.

Includes a dedicated 1 mL vessel drain pipette mandrel, external vessel drain pump, rapid vessel drain software steps, pump tubing set and 2 L vessel drain waste container.



Pipette Tip Bin

Pipette tip bins connect to the Ambr® 15 Cell Culture Generation 2 deck for collection of discarded pipette tips. The small and large pipette tip bins, made from polypropylene, are easily connected and disconnected via magnetic coupling and can be used interchangeably on the system workstation.

Please note that these pipette tip bins do not fit onto the Ambr® 15 Cell Culture Generation 1 or the Ambr® 15 Fermentation systems.

Ambr® 15 pipette tip bin, small



Ambr® 15 pipette tip bin, large



Accessories

Ambr® 15 Cell Culture clamp plate

Part no. 001-0B38

Each clamp plate makes direct connections to Ambr® 15 vessels in a culture station for the impeller drive system and gassing.

It is essential for continued operation of the Ambr® 15 Cell Culture system that spare | replacement clamp plates are available; to speed up experiment turnaround and avoid system downtime.

Clamp plates must be cleaned between experiments, and if they show signs of damage they will need to be replaced. It is recommended that clamp plates are not used for longer than 1 year | 20 autoclave cycles, whichever comes sooner.



Centrifuge Adapters

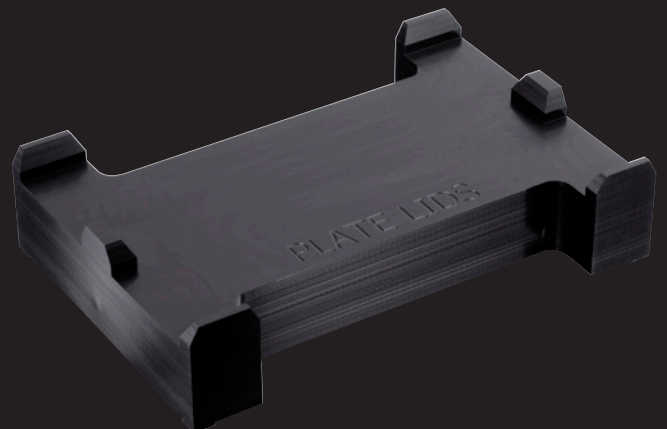
Part no. 001-8B49

Set of 4 centrifuge adapters, each adapter holds 3 Ambr® 15 Cell Culture microbioreactors. Compatible with YCSB-B8B buckets for Centrisart® G-16 and G-16C centrifuges.

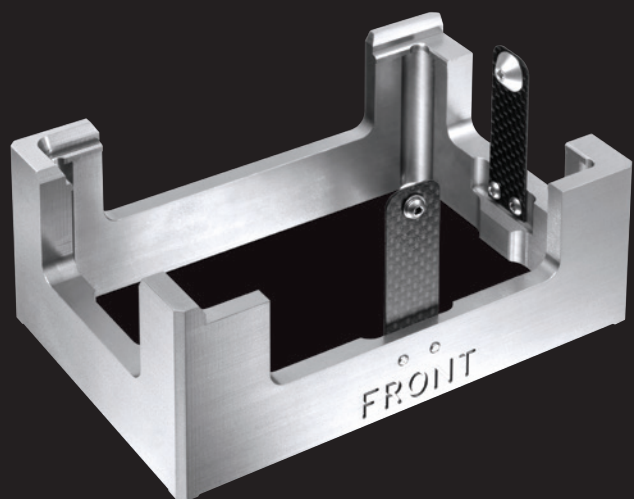


Ambr® 15 plate lid holder

Part no. 001-8B45



Ambr® 15 deck 1 mL tip box holder
Part no. 001-8B42



Ambr® 15 tip box lid holder
Part no. 001-8B44



Ambr® 15 deck 5 mL tip box holder
Part no. 001-8B43



Ambr® 15 universal plate holder
Part no. 001-8B46



Ambr[®] 15 Microbioreactor Vessels

**Ambr[®] 15 vessels,
with sparge tube**
Part no. 001-0B80

Ambr[®] 15 single use Microbioreactor with sparge tube, are designed to mimic the characteristics of larger scale bioreactors. The vessels include an integrated pitched blade impeller, sub-surface sparge tube, pH and DO sensor spots.

Pack contains 24 irradiated vessels, individually wrapped.




Ambr[®] 15 Vessels, Temperature Compensation

Recommended for use with the Ambr[®] 15 Cell Culture with cooling, these vessels are precalibrated for use over a wider temperature range. Additional calibration data extends the range of accurate pH measurement and control for culture temperatures below 33°C.

**Ambr[®] 15 vessels, temperature compensation,
with sparge tube**
Part no. 001-2B80

**Ambr[®] 15 vessels, temperature compensation,
no sparge tube**
Part no. 001-2B81

 **For more information, please visit**
[www.sartorius.com/en/products/fermentation-bioreactors/
ambr-multi-parallel-bioreactors/ambr-15-cell-culture](http://www.sartorius.com/en/products/fermentation-bioreactors/ambr-multi-parallel-bioreactors/ambr-15-cell-culture)



**Ambr® 15 vessels,
no sparge tube**

Part no. 001-0B81

Ambr® 15 single use microbioreactors without a sub-surface sparge tube. Gassing is into the vessel headspace. The vessels include an integrated pitched blade impeller, inlet gassing port into the headspace, pH and DO sensor spots.

Pack contains 24 irradiated vessels, individually wrapped.

Ambr® 15 Consumables Kits

Essential Ambr® 15 consumables are available to order as a consumables kit. This kit is ideal for new users as it includes all the essentials needed for one or two Ambr® 15 experiments.

Kit includes 2 packs of Ambr® 15 vessels, 2 packs of 1 mL tips, 1 pack of 5 mL tips, 1 pack of 24 well deep well plates.

Ambr® consumables kit, with sparge tube

Part no. 001-1B86

Ambr® consumables kit, no sparge tube

Part no. 001-1B87

**Ambr® consumables kit, temperature compensation,
with sparge tube**

Part no. 001-2B86

**Ambr® consumables kit, temperature compensation, no
sparge tube**

Part no. 001-2B87

Plates and Tips

5 mL disposable pipette tips, sterilized

Part no. A-0039

Ambr® 15 5 mL pipette tips are ideal for larger volume liquid handling, primarily media filling. Ambr® 15 is configured to operate using these high precision robotic tips. Max working volume 4 mL.

Pack contains 8 racks of 24 tips, individually wrapped.



1 mL disposable pipette tips, sterilized

Prt no. A-0040

Ambr® 15 1 mL pipette tips are ideal for sampling and lower volume liquid handling. Ambr® 15 is configured to operate using these high precision robotic tips. Max working volume 0.9 mL.

Pack contains 10 racks of 96 tips, individually wrapped.



🌐 For more information, please visit

[www.sartorius.com/en/products/fermentation-bioreactors/
ambr-multi-parallel-bioreactors/ambr-15-cell-culture](http://www.sartorius.com/en/products/fermentation-bioreactors/ambr-multi-parallel-bioreactors/ambr-15-cell-culture)

1 Well plates

Part no. A-0068

Single well plates are ideal for media filling during experiment setup. The large volume reduces the manual pipetting work and is ideal for experiments using a single media type. Pack contains 25 sterile plates with lids, individually wrapped. Working volume 240 mL per well, 1 well per plate.



24 Well deep well plates

Part no. A-0038

24 well deep well plates hold reagents and feeds on the workstation deck, before being added to Ambr® 15 vessels. The plates can also hold samples harvested from Ambr® 15 vessels. Pack contains 25 sterile plates with lids, individually wrapped. Working volume 8 mL per well, 24 wells per plate.



4 Row plates

Part no. A-0067

4 row plates hold reagents and feeds on the workstation deck, before being added to Ambr® vessels. The intermediate volume makes these plates suitable for media screening or large volume reagents such as base. Pack contains 25 sterile plates with lids, individually wrapped. Working volume 60 mL per well, 4 wells per plate.



Ambr® 15 Consumables Contracts

Ambr® 15 consumables are also available to order as part of a supply contract. With regular pre-agreed shipments, the consumables contract removes the need for frequent re-ordering of Ambr® 15 consumables.

For further details please contact:
Royston-orders@Sartorius.com

Sales and Service Contacts

For further contacts, visit
www.sartorius.com

Germany

Sartorius Lab Instruments
GmbH & Co. KG
Otto-Brenner-Strasse 20
37079 Goettingen
Phone +49 551 308 0

USA

Sartorius Corporation
5 Orville Drive, Suite 200
Bohemia, NY 11716
Phone +1 631 254 4249
Toll-free +1 800 635 2906